

The background of the slide features a tall, spiral-patterned lighthouse on the left side, illuminated from within. The scene is set against a dark, overcast sky. The entire image is overlaid with a large, semi-transparent blue shape that tapers from the top right towards the bottom left, creating a dynamic geometric effect.

# A campaign against single use plastics bottles onboard ships

Aron Sorensen  
Head of Marine Environment

Tripartite, November 2023

# My presentation today



Why the focus on single-use plastics?



BIMCO campaign



Changing water supply on board



Challenges and solutions

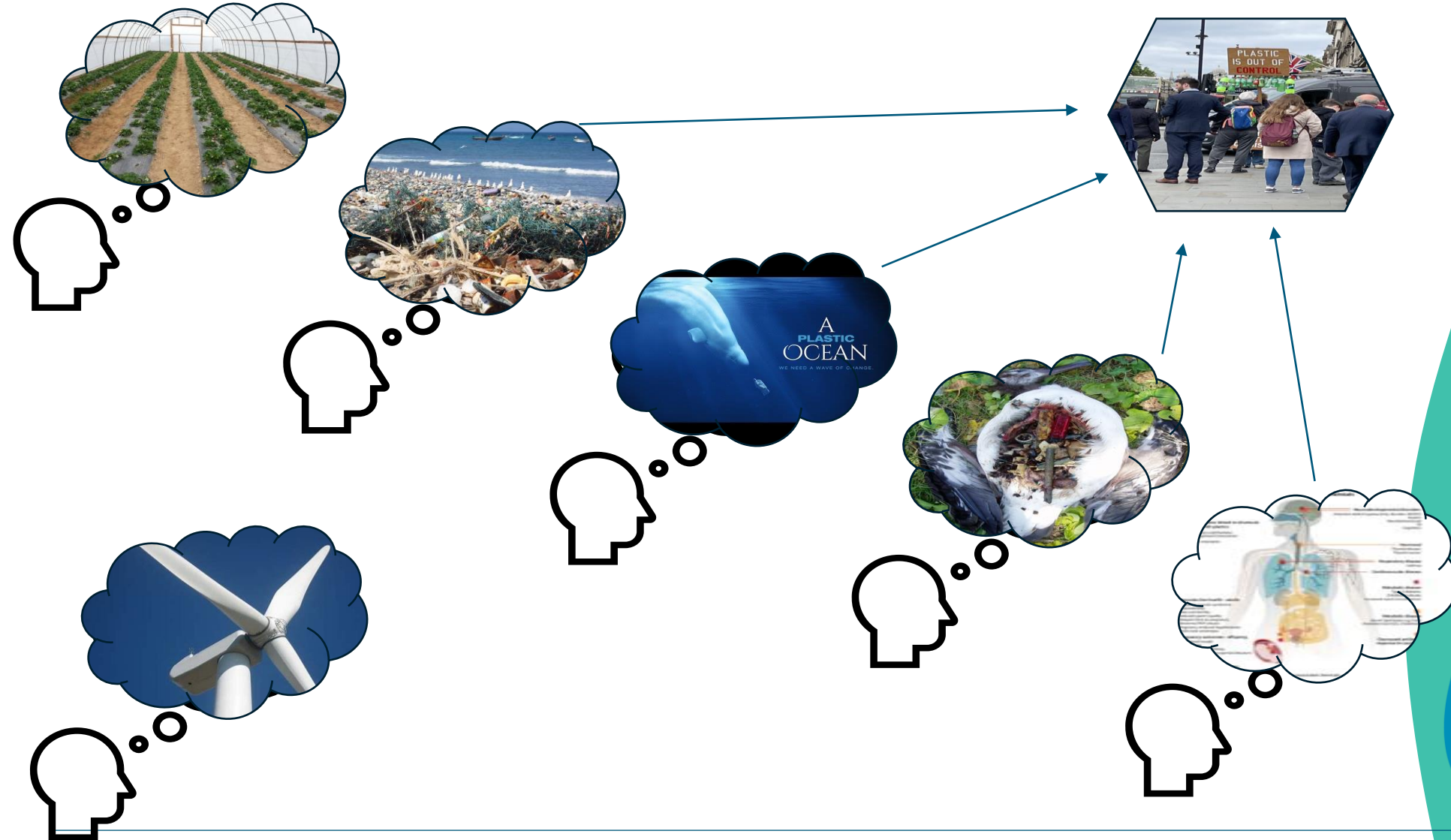
**BIMCO**



**TOGETHER  
FOR A  
PLASTIC FREE  
OCEAN**

# An evolution in how we feel and think

**BIMCO**



**TOGETHER  
FOR A  
PLASTIC FREE  
OCEAN**

# Single-use plastics are the problem.....

BIMCO

## TOP 10 SINGLE-USE PLASTIC ITEMS FOUND ON SEA SHORES

- 1 Drink bottles, caps and lids
- 2 Cigarette butts
- 3 **Cotton buds sticks**
- 4 Crisp packets/sweet wrappers
- 5 Sanitary applications (sanitary towels, tampons etc.)
- 6 Plastic bags
- 7 **Cutlery, straws and stirrers**
- 8 Drinks cups and cup lids
- 9 Balloons and **balloon sticks**
- 10 Food containers, including fast food packaging



Items in yellow could soon be banned as non-plastic alternatives are now available.

Source: European Commission



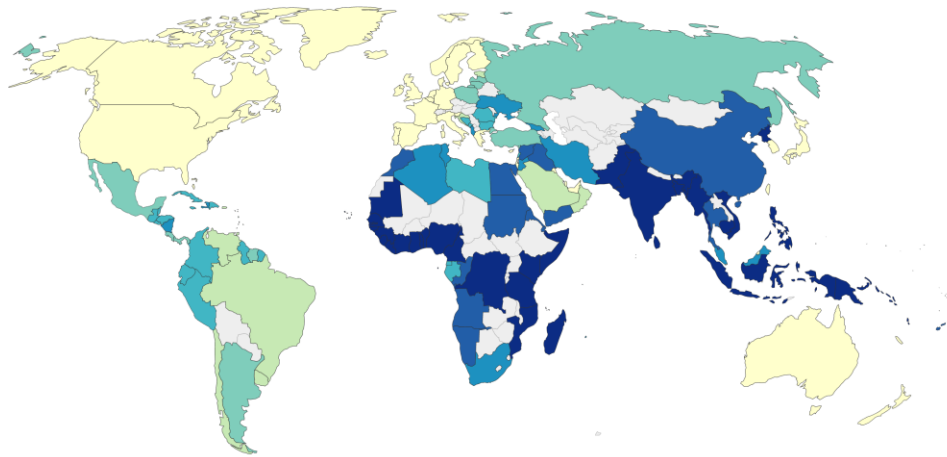
TOGETHER  
FOR A  
PLASTIC FREE  
OCEAN



## ... as is how we manage them

### Share of plastic waste that is inadequately managed, 2010

Inadequately disposed waste is not formally managed and includes disposal in dumps or open, uncontrolled landfills, where it is not fully contained. Inadequately managed waste has high risk of polluting rivers and oceans.



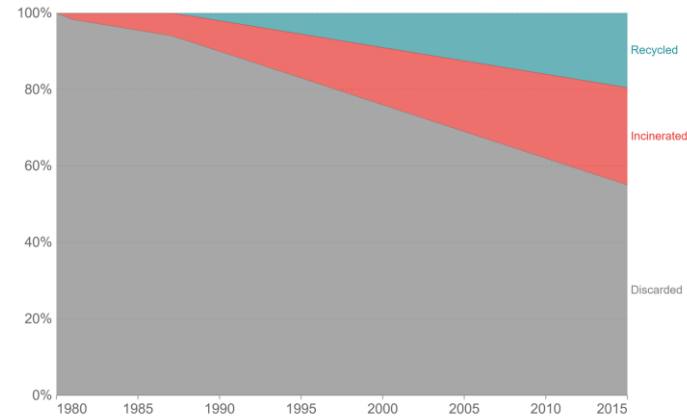
Source: Jambeck et al. (2015)

Note: This does not include 'littered' plastic waste, which is approximately 2% of total waste.

OurWorldInData.org/plastic-pollution • C

### Global plastic waste by disposal, 1980 to 2015

Estimated share of global plastic waste by disposal method.



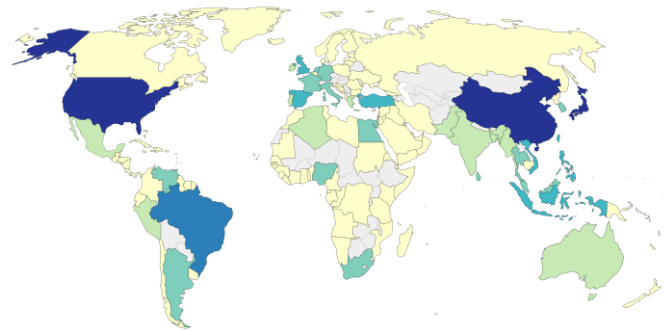
Source: Geyer et al. (2017)

Our World in Data

CC BY

### Plastic waste littered, 2010

Annual plastic waste littered by coastal populations within 50 kilometres of a coastline. This represents plastic waste with high risk of polluting surrounding rivers and the ocean.



Source: Jambeck et al. (2015)

Our World in Data

CC BY



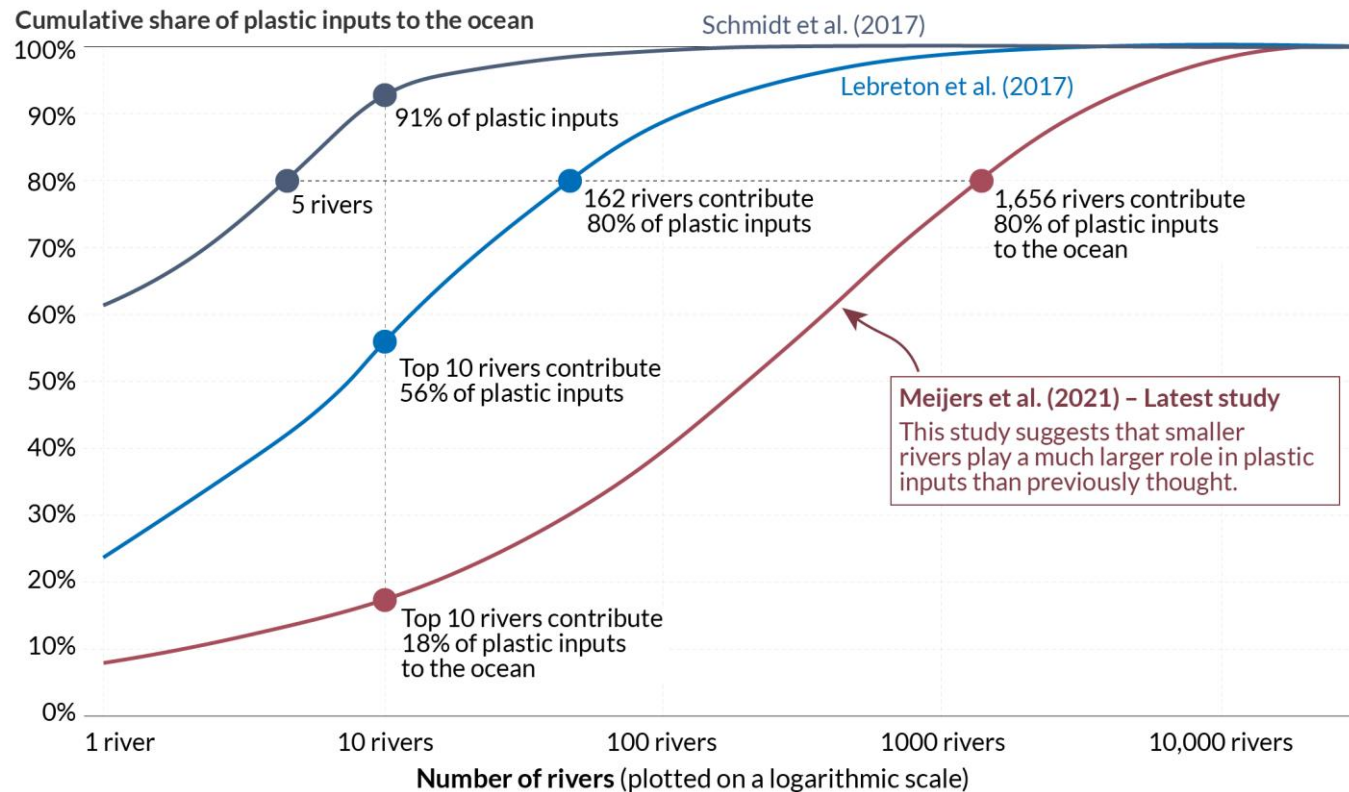
**TOGETHER  
FOR A  
PLASTIC FREE  
OCEAN**

# Shipping in perspective

## How many rivers are responsible for what share of plastic input into the world's oceans?

Our World  
in Data

Two earlier studies (in blue) compared with the latest study that uses higher-resolution data (in red).



**Meijers et al. (2021) - Latest study**  
This study suggests that smaller rivers play a much larger role in plastic inputs than previously thought.

Source: Lourens Meijer et al. (2021). Over 1,000 rivers account for 80% of global riverine plastic emissions into the ocean. *Science Advances*.

OurWorldinData.org - Research and data to make progress against the world's largest problems.

Licensed under CC-BY by the author Hannah Ritchie (2021).



**TOGETHER  
FOR A  
PLASTIC FREE  
OCEAN**

# A developing regulatory arena

Simplified overview of the discharge provisions of the revised MARPOL Annex V which entered into force on 1 March 2018



## Technical Circular

DISCLAIMER: Additional requirements may apply.

No.: 036/2019

Date: 24<sup>th</sup>

(Note: The table below is intended as a summary reference. The provisions in Annex V and the Polar Code, not the table below, prevail.)

Garbage type <sup>1</sup>	All ships except platforms <sup>4</sup>		Regulation 6 Offshore platforms located more than 500 m from nearest land
	Regulation 4 Outside special areas and Arctic waters (Distances are from the nearest land)	Regulation 6 Within special areas and Arctic waters (Distances are from nearest land, nearest ice-shelf or nearest fast ice)	
Food waste comminuted or ground <sup>2</sup>	≥3 nm, en route and as far as practicable	≥12 nm, en route and as far as practicable <sup>3</sup>	Discharge prohibited
Food waste not comminuted or ground	≥12 nm, en route and as far as practicable	Discharge prohibited	Discharge prohibited
Cargo residues <sup>5</sup> not contained in washwater		Discharge prohibited	Discharge prohibited
Cargo residues <sup>5</sup> contained in washwater	≥ 12 nm, en route and as far as practicable	≥ 12 nm, en route and as far as practicable (subject to conditions in regulation 6.1.2 and paragraph 5.2.1.5 of part II-A of the Polar Code)	Discharge prohibited
Cleaning agents and additives <sup>6</sup> contained in cargo hold washwater	Discharge permitted	≥ 12 nm, en route and as far as practicable (subject to conditions in regulation 6.1.2 and paragraph 5.2.1.5 of part II-A of the Polar Code)	Discharge prohibited
Cleaning agents and additives <sup>6</sup> in deck and external surfaces washwater		Discharge permitted	Discharge prohibited
Animal Carcasses (should be split or otherwise treated to ensure the carcasses will sink immediately)	Must be en route and as far from the nearest land as possible. Should be >100 nm and maximum water depth	Discharge prohibited	Discharge prohibited
All other garbage including plastics, synthetic ropes, fishing gear, plastic garbage bags, incinerator ashes, clinkers, cooking oil, floating dunnage, lining and packing materials, paper, rags, glass, metal, bottles, crockery and similar refuse	Discharge prohibited	Discharge prohibited	Discharge prohibited

**Subject: DGS Order No. 05 of 2019 Reg Prohibition on use of Plastics.**

- Director General of shipping, GOI vide DGS Order No. 05 of 2019 (copy) imposed a ban on single use plastic on all Indian ships and foreign ships with waters, as follows;
- Following Single use plastics are prohibited to be used on board Indian ships when such ships are at a port or place in India;

### ► Items prohibited w.e.f. 01.01.2020:

- Bags, trays, containers, food packaging film;
- Milk bottles, freezer bags, shampoo bottles, ice cream containers;
- Bottles for water and other drinks, dispensing containers for clear biscuit trays;
- Hot drink cups, insulated food packaging, protective packaging items;
- Microwave dishes, ice cream tubs, potato chip bags, bottle caps.

### ► Items prohibited with immediate effect:

- Cutlery, plates and cups;
- Up-to 10 litres bottles for water and other drinks;
- Garbage and shopping bags; and
- Dispensing containers for cleaning fluids which are less than 10 litres.

### • Enforcement of above requirements on Indian ships:

- Verification of compliance to the above requirement to ensure that plastics are not used/ stored on board any ship will be done during inspections and audits of Indian ships.

- Further, during Flag State Inspections, in case of non-compliance to the above requirement, a deficiency will be raised to be rectified prior departure. If same deficiency is repeated during next inspection, it may lead to detention by Flag State.



UNITED NATIONS



United Nations Environment Programme

UNEP/PP/INC.3/4

Distr.: General  
4 September 2023  
Original: English

**Intergovernmental negotiating committee to develop an international legally binding instrument on plastic pollution, including in the marine environment**

**Third session**  
Nairobi, 13–19 November 2023\*  
Item 4 of the provisional agenda

**Preparation of an international legally binding instrument on plastic pollution, including in the marine environment**

### Zero draft text of the international legally binding instrument on plastic pollution, including in the marine environment

#### Note by the secretariat

1. United Nations Environment Assembly (UNEA) resolution 5/14 requested the Executive Director of the United Nations Environment Programme (UNEP) to convene an intergovernmental negotiating committee, to begin its work during the second half of 2022, with the ambition of completing its work by the end of 2024. The intergovernmental negotiating committee is to develop an international legally binding instrument on plastic pollution, including in the marine environment, which could include both binding and voluntary approaches, based on a comprehensive approach that addresses the full life cycle of plastic, taking into account, among other things, the principles of the Rio Declaration on Environment and Development, as well as national circumstances and capabilities.

# BIMCO



## TOGETHER FOR A PLASTIC FREE OCEAN

<sup>1</sup> When garbage is mixed with or contaminated by other harmful substances prohibited from having different discharge requirements, the more stringent requirements shall apply.

<sup>2</sup> Comminuted or ground food wastes must be able to pass through a screen with mesh no larger than 25 mm.



# The contribution of water bottles

 TurnTheTideOnPlastic  
@TurnTidePlastic

50% of the Plastic we use, we use just once and throw away. 😞

#turnthetideonplastic #beatpollution #cleanseas #plasticpollution



**"WHAT DIFFERENCE IS  
ONE BOTTLE  
GOING TO MAKE?"**

- says 7 billion people



9:37 AM · Dec 2, 2017 from Cape Town, South Africa

231 13 Share this Tweet

**THE SHIPPING INDUSTRY  
USES UP TO 1 BILLION  
SINGLE USE PLASTIC  
BOTTLES A YEAR**



**CHOOSE TO REDUCE  
SINGLE USE PLASTICS**

**BIMCO**  **TOGETHER  
FOR A  
PLASTIC FREE  
OCEAN**

# BIMCO



**TOGETHER  
FOR A  
PLASTIC FREE  
OCEAN**





An  
environmental  
imperative



A business  
imperative



A climate  
imperative



**BIMCO**



**TOGETHER  
FOR A  
PLASTIC FREE  
OCEAN**

# Solutions – Retrofit – Water purification/advanced treatment systems

**BIMCO**

## Purifier



- Prefiltration
- Carbon filter
- Reverse osmosis
- Remineralisation

## Dispenser



- Hot water
- Cold water
- Sparkling water



**TOGETHER  
FOR A  
PLASTIC FREE  
OCEAN**

I will get sick from drinking the water onboard

There is no trust in the maintenance and testing regimes onboard

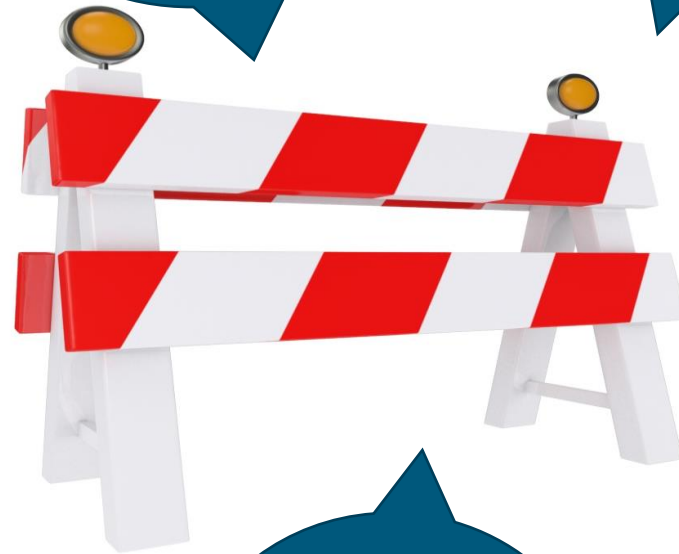
Soon we will have alternatives that are sustainable

Installing or upgrading systems costs too much

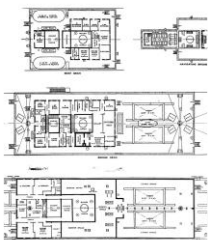
Bottled water provides me with vitamins and minerals I need

Ships contribute so much less than plastics from land

The water tastes horrible



## Solutions – Design, training and maintenance



Chose type and capacity of the advanced water system based on the ship's size, number people onboard, and its planned operations.



Equip the ship with water production units (like a reverse osmosis), treatment equipment, storage tanks, and piping.



Integrate the chosen system into the overall design of the ship, by including considerations for space, power requirements, connections to other systems, and risk of contamination.



Test the water system and each component initially to ensure it operates correctly and produces water that meets/exceeds potable water standards.

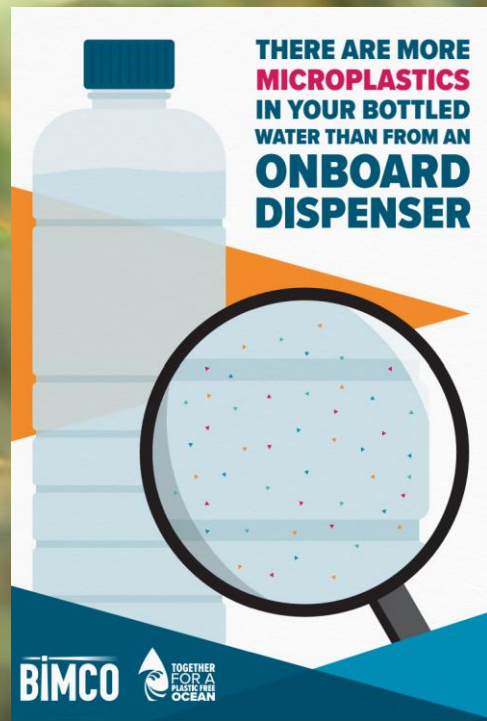


Crew member engagement and acceptance is essential. Crew members should be trained on the operation, maintenance, and monitoring of the advanced drinking water system.



**TOGETHER  
FOR A  
PLASTIC FREE  
OCEAN**





Stay in touch  
[www.bimco.org/trending-topics/plastic](http://www.bimco.org/trending-topics/plastic)